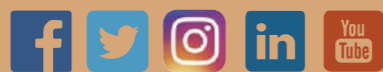




INTCO DECOR



www.intcodecor.com
Follow us on social media @Intco Decor



MDF ACOUSTIC PANEL

NATURAL AMBIANCE FOR THE HOME



Noise Reduction





MDF ACOUSTIC PANEL

Excessive noise and echo can severely disrupt the tranquility of both work and home environments. MDF ACOUSTIC PANEL is meticulously crafted using specialized sound-absorbing felt and sustainable materials, offering an ideal solution to strike the perfect balance and harmony in any home or office space.

INTCO DECOR

PRODUCT PROFILE **01**

Series
Material
Advantages
Specifications

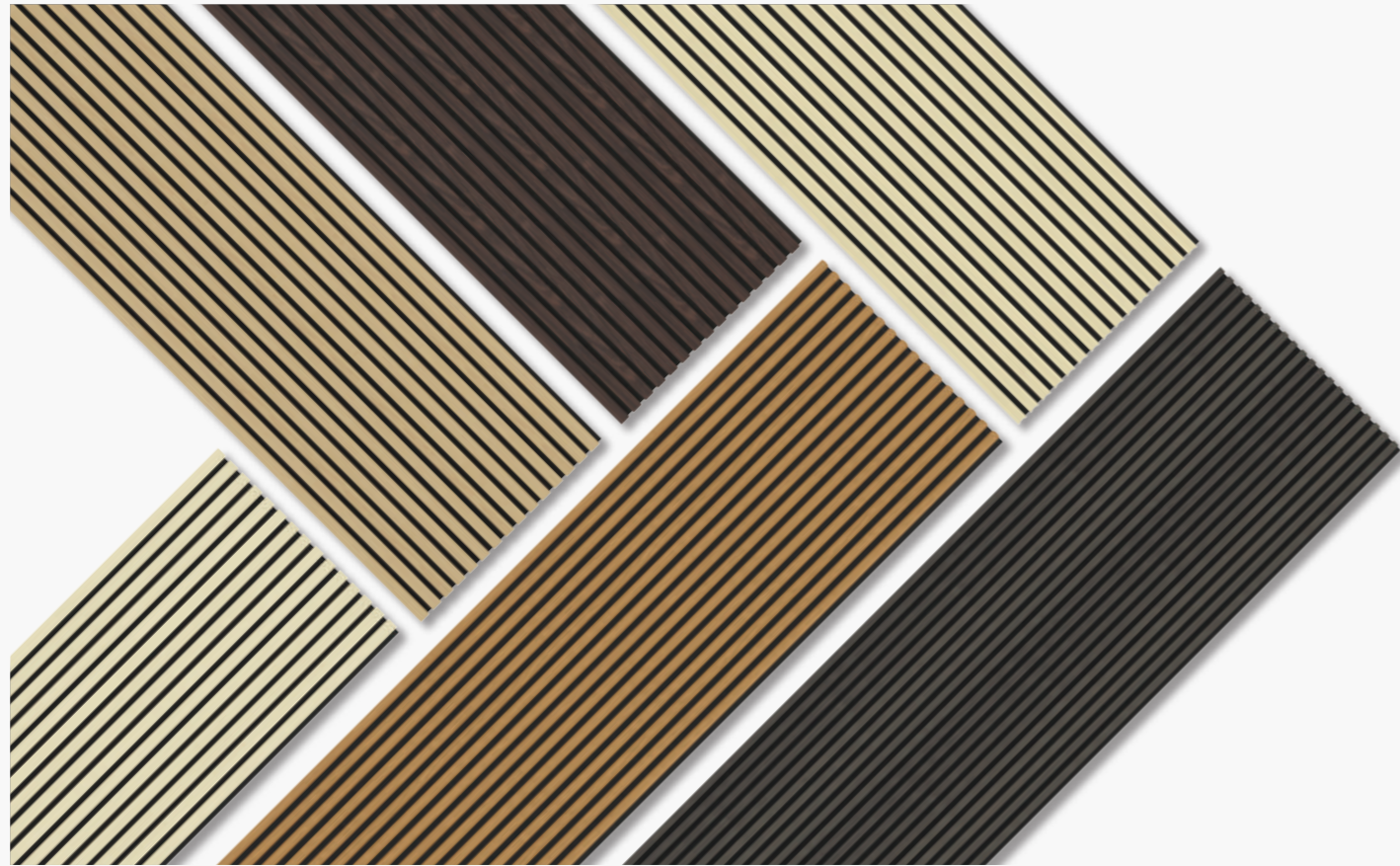
SERIES **03**

Hemsworth
Auden
Ledger
Thayer

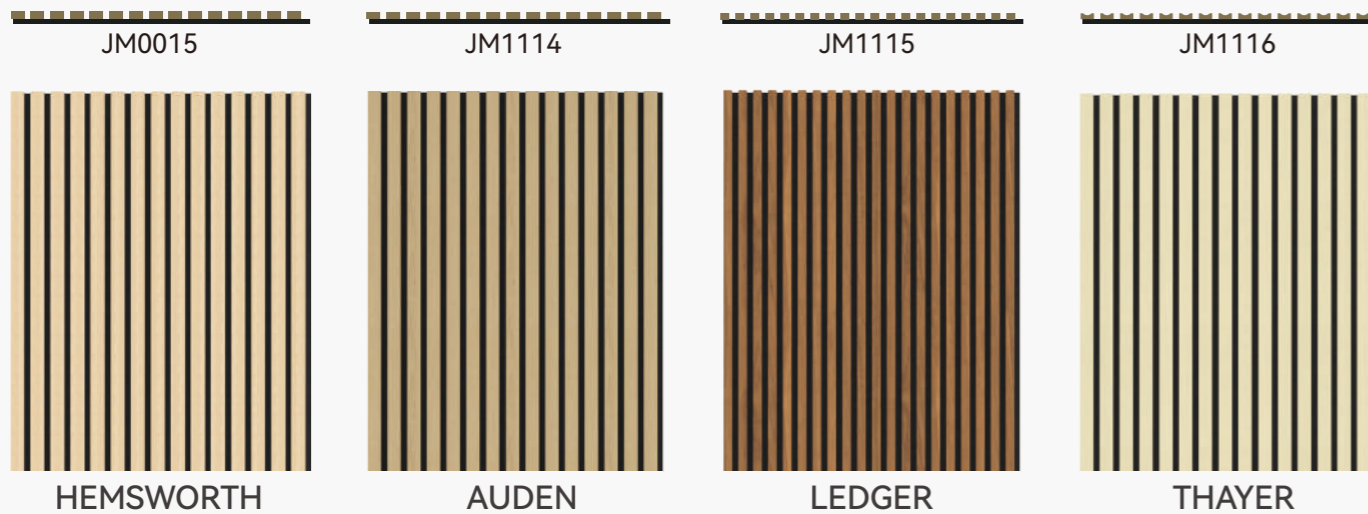
COLORS **11**

Paper
Wood veneer
Nature Wood veneer

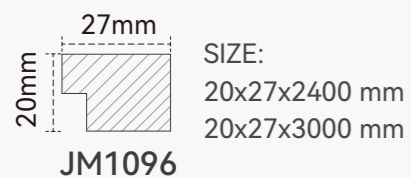
INSTALLATION **12**



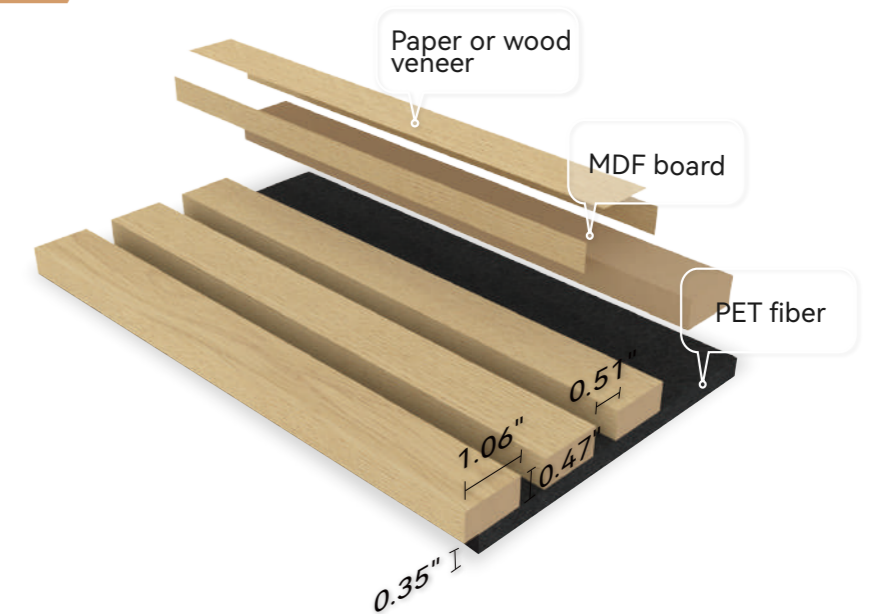
SERIES



ACCESSORIES



MATERIAL



ADVANTAGES



NOISE REDUCTION

Sound-absorbing felt mitigates noise and reduced unwanted reverberations.

DIVERSE DESIGN

Versatile woodgrain colors and finishes to appeal to any style of home or office.

FLAME RETARDANT

The black acoustic felt can achieve B1 grade flame retardancy.

ECO-FRIENDLY

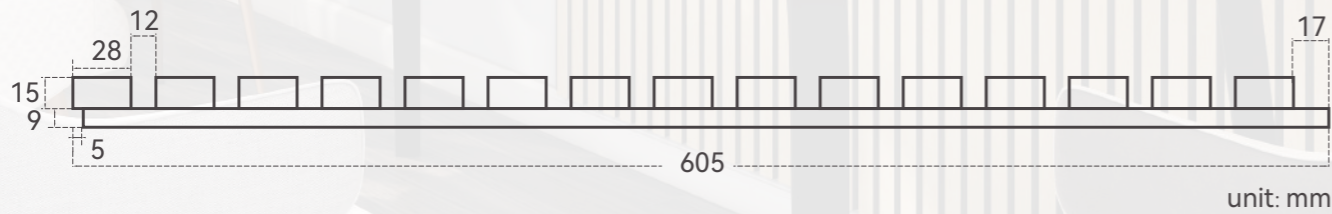
CARB P2 grade medium density fiberboard protects from harmful gases and compounds.

SPECIFICATIONS

Material	MDF & PET
Finish	Paper or wood veneer
Length	2400/3000 mm
Width	285/305/605 mm
Thickness	21/24mm
Eco-friendly	CARB P2
Fire resistance	EN 13501CLASS B, ASTM E84 CLASS A
Noise reduction coefficient	0.8
Installation	Screws or Glue

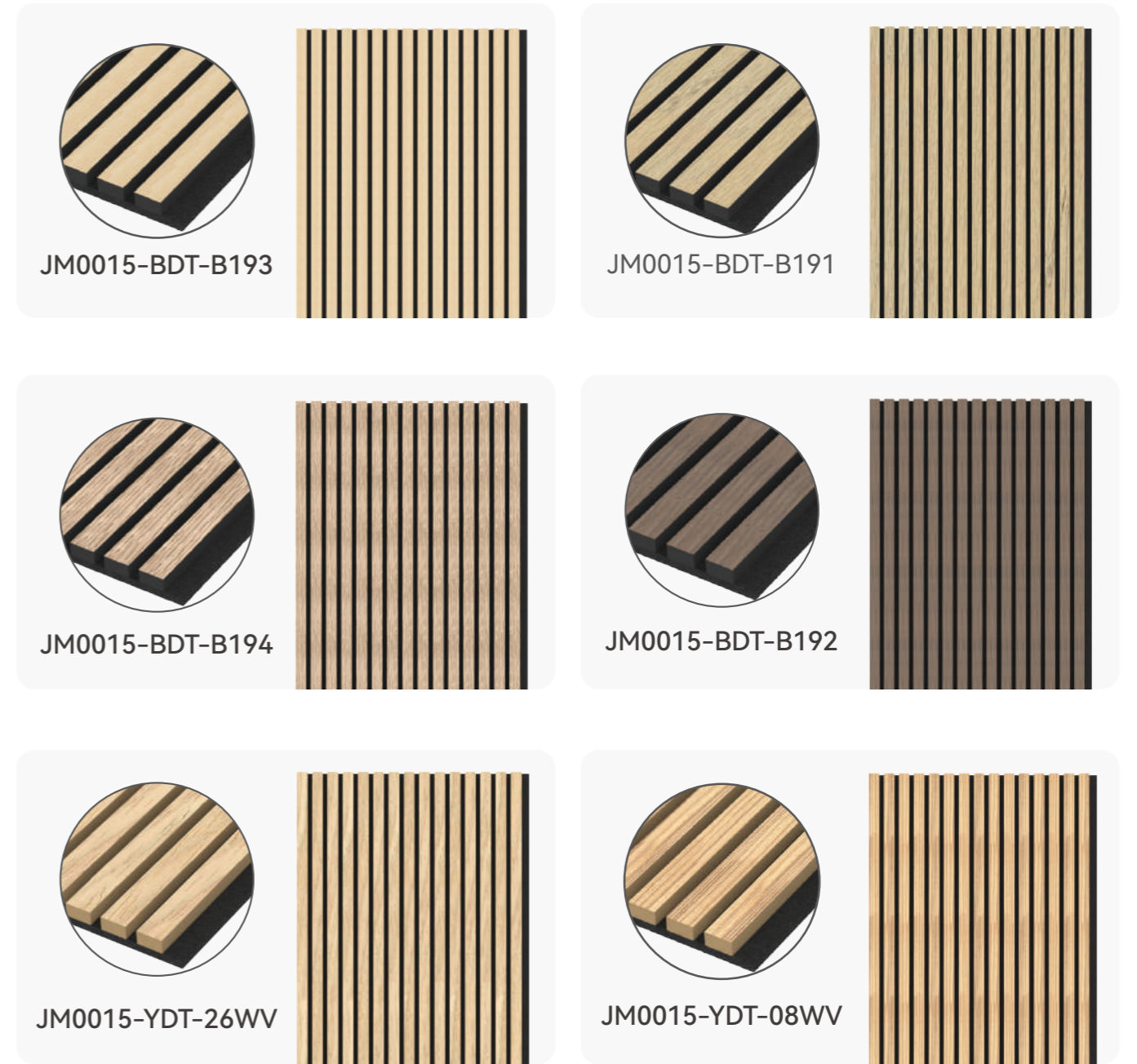
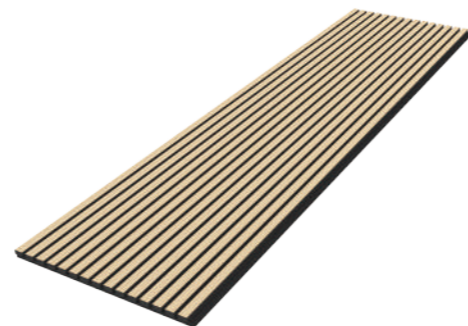


JM0015-BDT-B193



HEMSWORTH

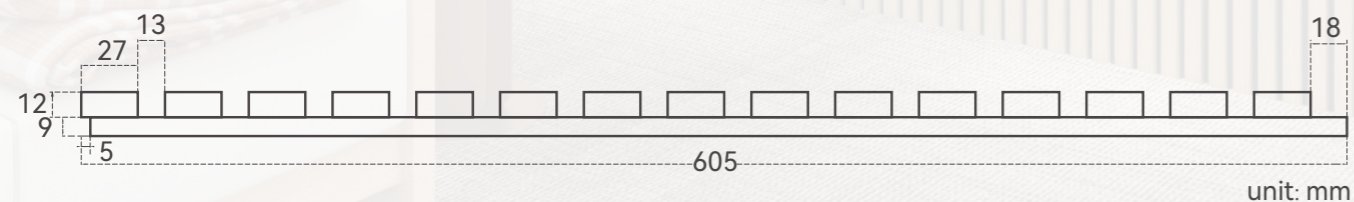
Our unique texture adds warmth and comfort to your space, making you feel like you're surrounded by a forest. Our wall panels are designed to offer a simple and classic aesthetic that adapts to various interior design schemes. Whether you're looking to create a rustic countryside style or a modern elegant atmosphere, Hemsworth is here to meet your needs.



Total size	24x605x2400mm; 24x605x3000mm; 24x285x2400mm; 24x285x3000mm
Weight	10.8kg / 13.6kg / 5.1kg / 6.3kg
Number of MDF board	15 / 7 pcs
Size of MDF board	28x15mm
Distance between MDF board	12mm

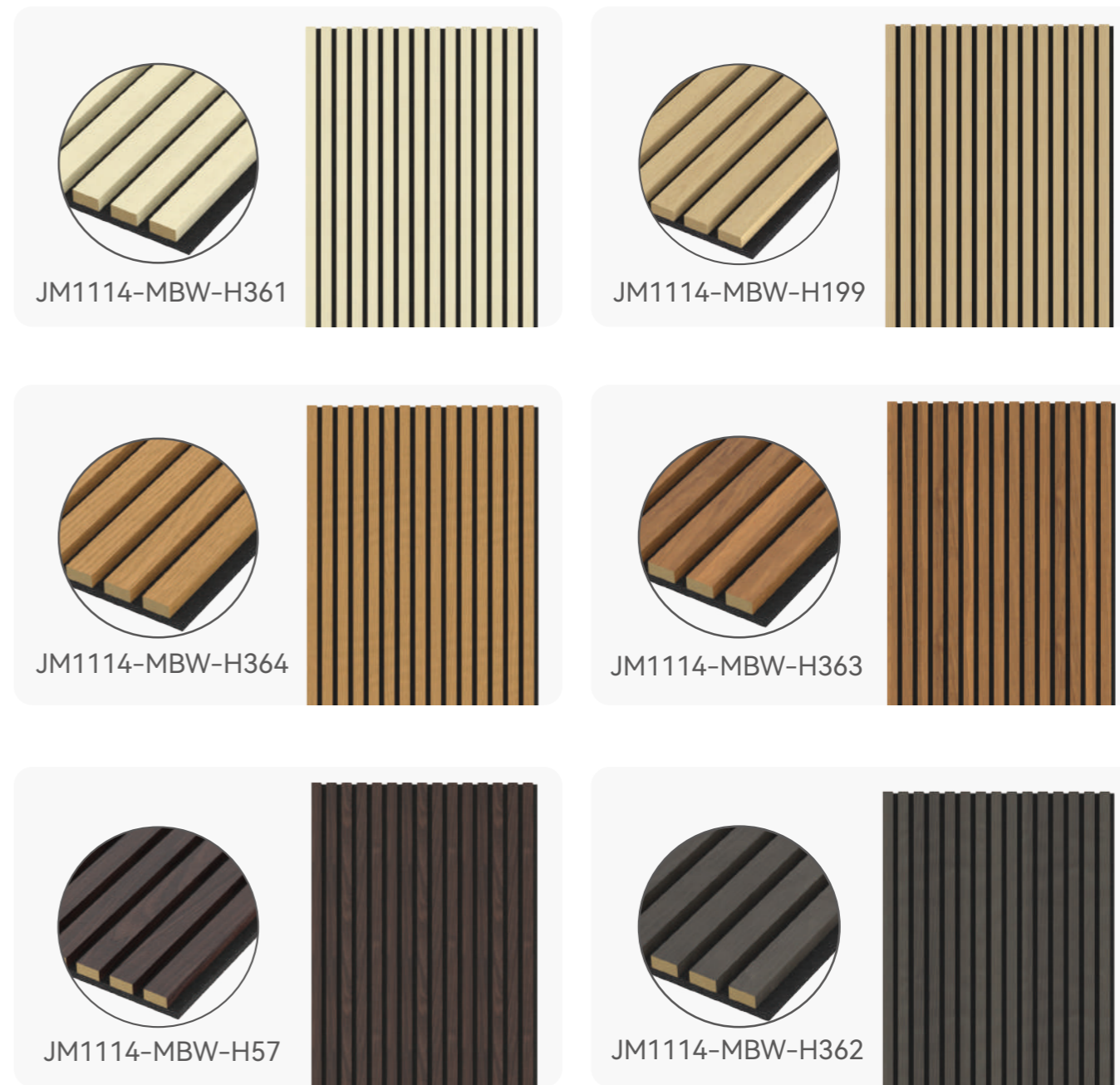
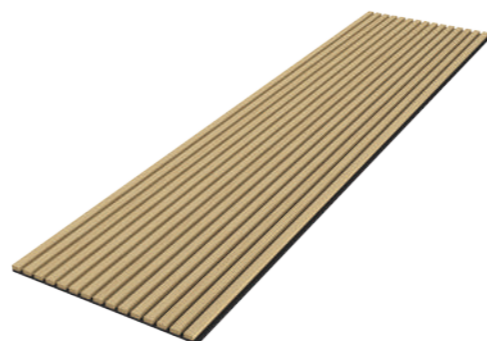


JM1114-MBW-H199



AUDEN

Our clean, modern reeded pattern features a minimalist appeal that plays homage to traditional classical architecture and design. This timeless look brings a comforting contrast and unique focal point to any room. From accent walls to acoustic ceilings, this timeless pattern comes in a variety of modern finishes.



Total size	21x605x2400mm; 21x605x3000mm; 21x285x2400mm; 21x285x3000mm
Weight	10.8kg / 13.6kg / 5.1kg / 6.3kg
Number of MDF board	15 / 7 pcs
Size of MDF board	27x12mm
Distance between MDF board	13mm

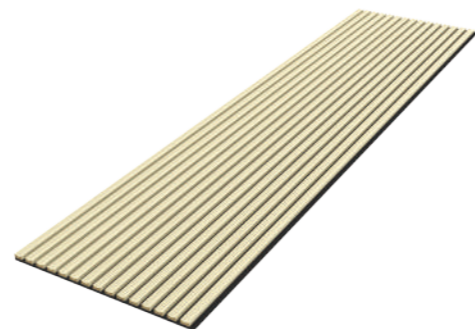


JM1116-MBW-H361



THAYER

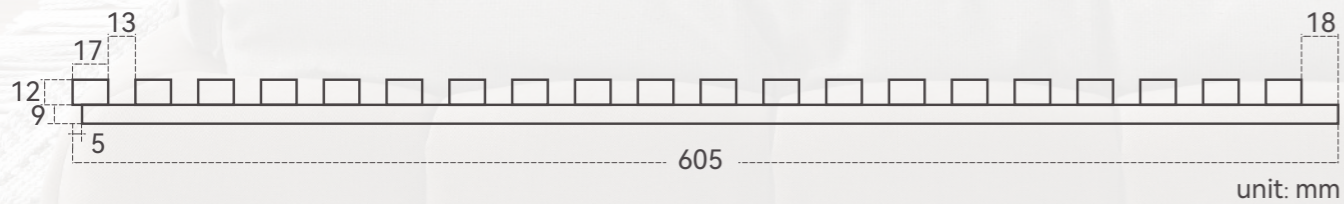
Featuring an artfully crafted fluted design, the THAYER collection is an eclectic-yet-chic look that brings trend-forward personality to any space. Adorned with unique contrasting finishes, this cohesive collection boasts artisan appeal and visual interest for any home.



Total size	21x605x2400mm; 21x605x3000mm; 21x285x2400mm; 21x285x3000mm
Weight	9.4kg / 11.8kg / 4.4kg / 5.5kg
Number of MDF board	15 / 7 pcs
Size of MDF board	27x12mm
Distance between MDF board	13mm

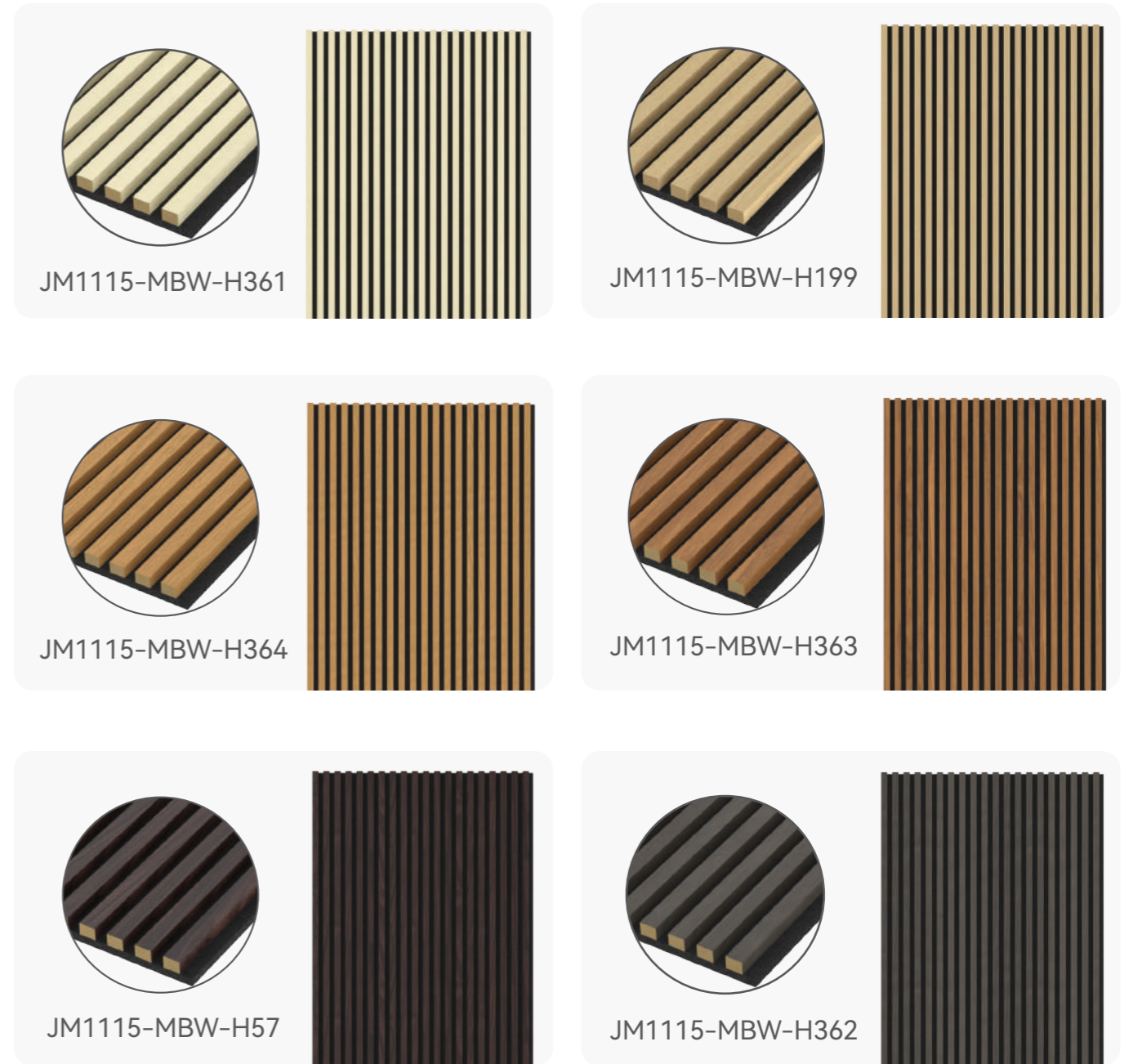
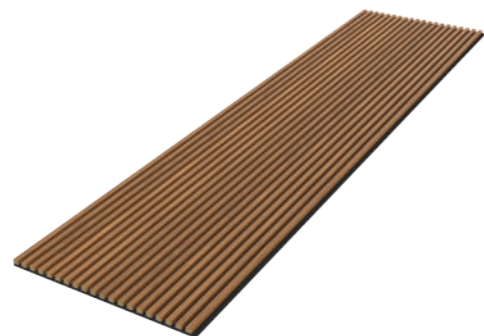


JM1115-MBW-H363



LEDGER

Stunningly textural, our LEDGER collection features a narrow slatted pattern with varying color and detail. Inspired by the architectural details of the Arts and Crafts movement, this modern collection brings one-of-a-kind character to any room creating a high-end transitional look.



Total size	21x605x2400mm; 21x605x3000mm; 21x305x2400mm; 21x305x3000mm
Weight	9.5kg / 11.9kg / 4.8kg / 6.0kg
Number of MDF board	20 / 10 pcs
Size of MDF board	17x12mm
Distance between MDF board	13mm

COLORS

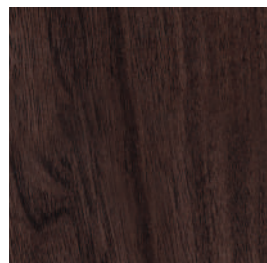
Paper



H361



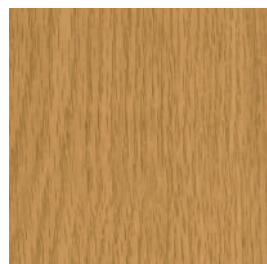
H199



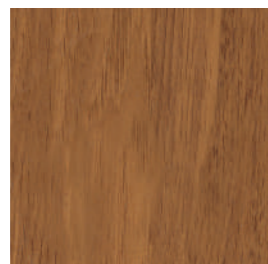
H57



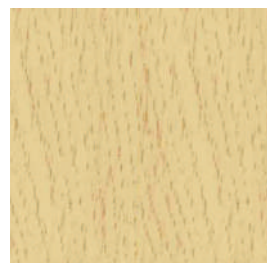
H362



H364



H363



H188



H31

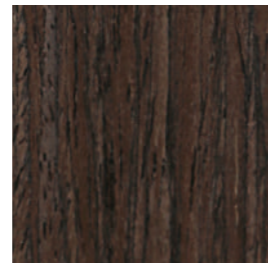
Wood veneer



30WV



26WV



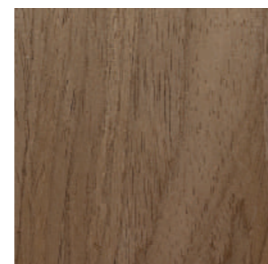
23WV



22WV



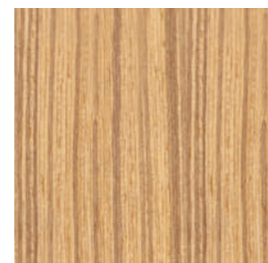
10WV



B111



20WV

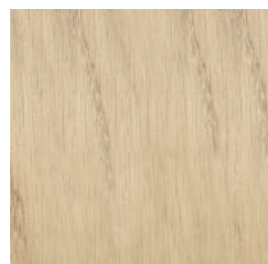


08WV

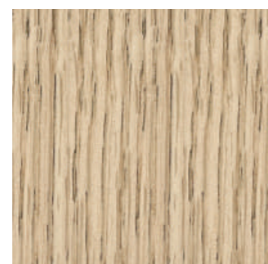
Nature Wood veneer



B193



B191

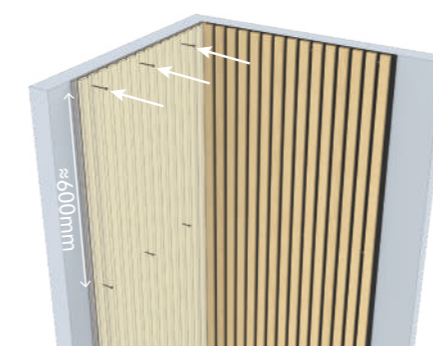
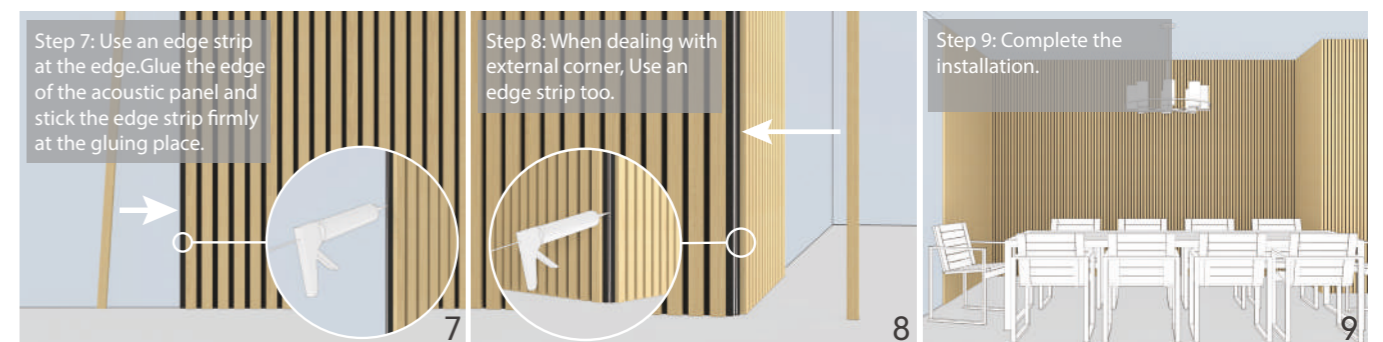
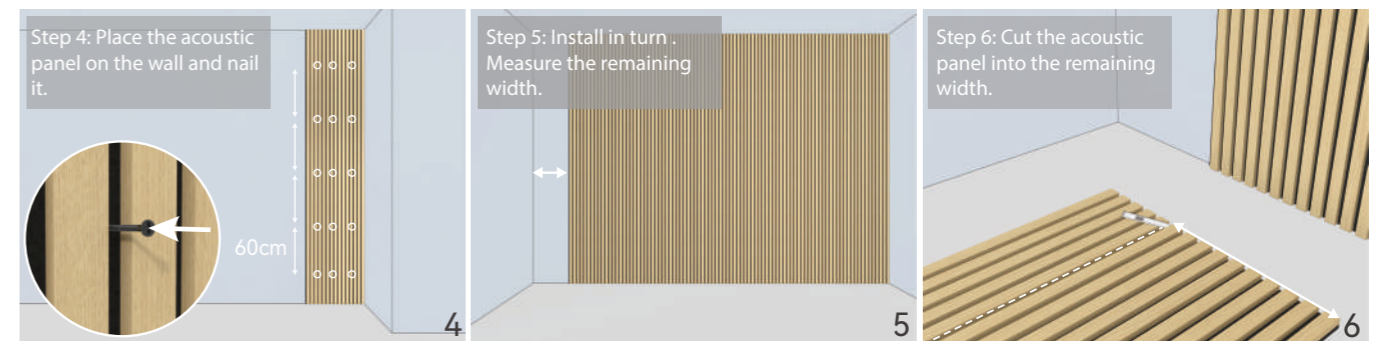
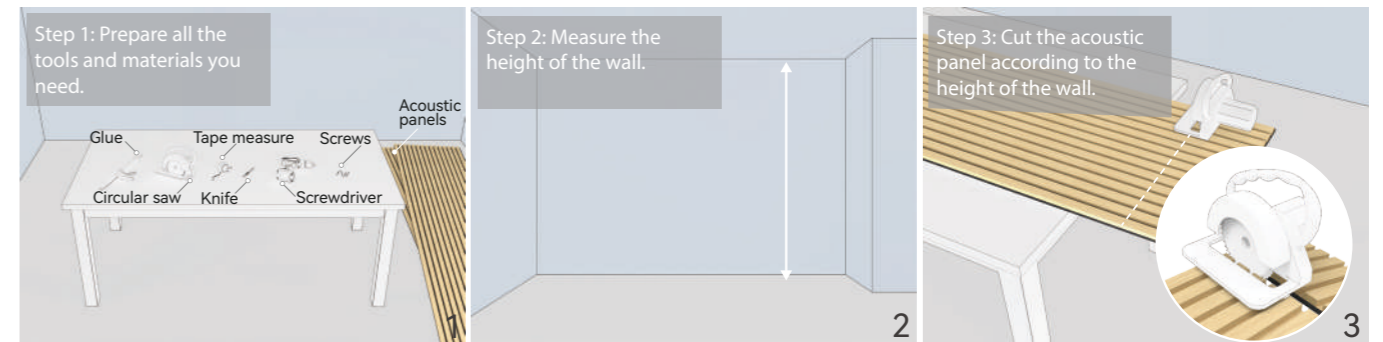


B194

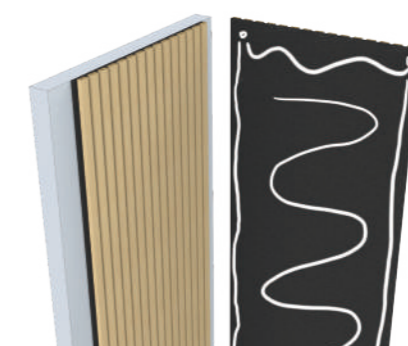


B192

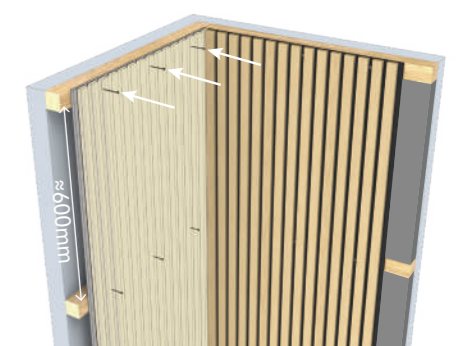
INSTALLATION



A. Nail acoustic panels directly to the wall.



B. Attach acoustic panels to the wall with nail-free glue.
absorption class: D



C. Install fibreglass wool or rock wool between the battens.
absorption class: B